

# VCE4Plus



Everything you need to prepare, learn & pass your certification exam easily.

## Pass Your Next Certification Exam Fast!

365 days free updates. First attempt guaranteed success.

Choose the version that fits your needs	PDF Version	Desktop Test Engine	Online Test Engine
Latest and Up-to-Date exam dumps with real exam questions answers.	✓	✓	✓
Get 12-Months free updates without any extra charges.	✓	✓	✓
Experience same exam environment before appearing in the certification exam.	✗	✓	✓
100% exam passing guarantee in the first attempt.	✓	✓	✓
20% discount on more than one license and 30% discount on 5+ license purchases.	✗	✓	✓
100% secure purchase on SSL.	✓	✓	✓
Completely private purchase without sharing your personal info with anyone.	✓	✓	✓

<http://www.vce4plus.com>

Accurate exam material ensure you pass for sure by your first attempt - VCE4Plus

**Exam** : **C4090-457**

**Title** : IBM Storwize V7000  
Implementation V1

**Vendor** : IBM

**Version** : DEMO

NO.1 What does the multipathing driver on the host accomplish?

- A. Corrects any network error
- B. Creates a logical volume to the LUN
- C. Consolidates the instances of the same LUN
- D. Increases the number of ports the LUN reports to

**Answer: C**

NO.2 Operating the system with missing drive assemblies will cause what in the Storwize V7000?

- A. Power distribution problems
- B. Inability to connect additional enclosures
- C. Disrupt airflow and cause heat issues
- D. Fault errors on the controllers

**Answer: C**

NO.3 An implementer provisioned storage from the Storwize V7000 to all hosts per the implementation plan an audit determined that host volumes utilized less than 50% of their allocated storage.

What steps can be taken to reclaim the underutilized space?

- A. Remove MDisks from the pools
- B. Shrink all volumes and then remap to hosts
- C. Use Real-time Compression to compress all volumes
- D. Create a thin provisioned volume and use host mirroring to migrate the data

**Answer: C**

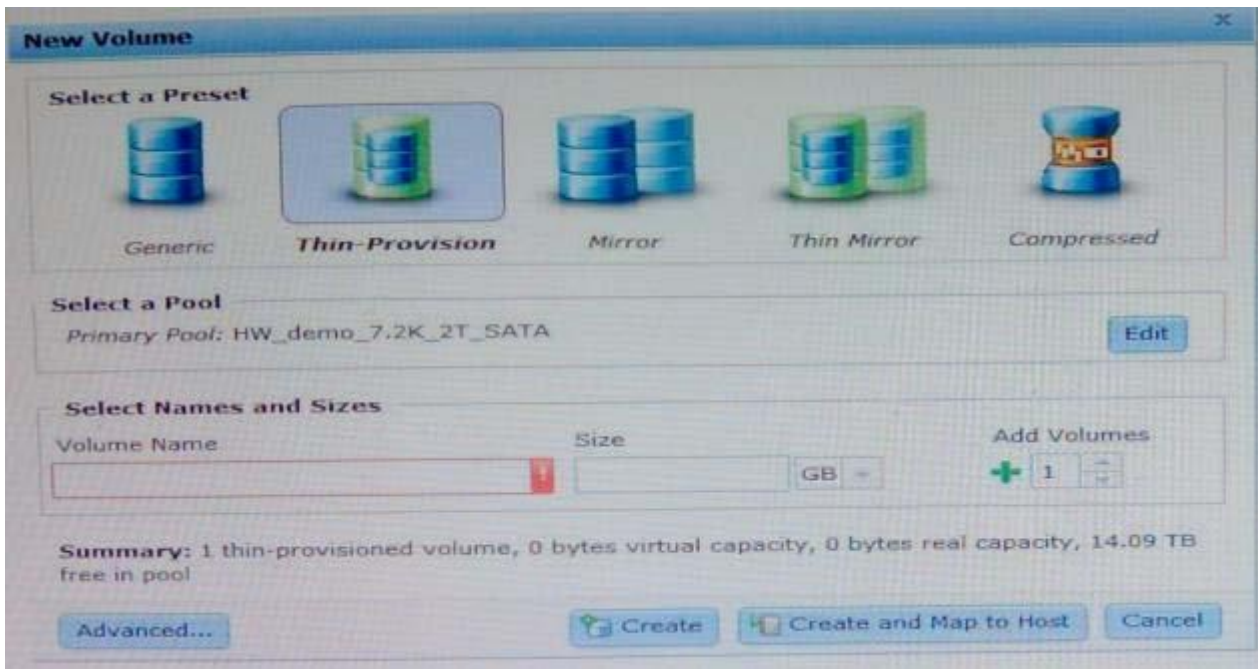
NO.4 An implementer is looking to verify supported HBAs, firmware, and driver levels for the Storwize V7000.

What two places should be checked?

- A. SSIC and Interoperability Matrix
- B. Announcement Letters and Techline
- C. IBM Support Portal and Interoperability Matrix
- D. SSIC and IBM Support Portal

**Answer: A**

NO.5 While creating a volume a user selects the "Advanced" button on a Storwize V7000.



What advanced options become available upon selection of the wizard?

- A. Characteristics, pool and host mapping
- B. Mirroring, characteristics and capacity management
- C. Capacity management, FlashCopy host mapping
- D. Host mapping, mirroring and I/O group

**Answer:** B

NO.6 An implementer has started the Storwize V7000 management GUI for the first time. What item is displayed automatically in the GUI?

- A. Serial number
- B. IBM's email address for Gall Home support
- C. Date and time
- D. Licenses

**Answer:** D

NO.7 What action must be taken before Easy Tier can become functionally enabled?

- A. Enable via CLI
- B. Creation of a hybrid pool with SSD
- C. Selecting the create Easy Tier pool on the GUI
- D. Creation of a hybrid pool with SAS and NL-SAS drives

**Answer:** A

NO.8 An implementer has purchased a clustered Storwize V7000 with external virtualization licenses. Originally, an EMC subsystem was to be virtualized and it was to host one of the Storwize V7000 cluster's quorum disks. However, during the implementation, the customer decided to replace the EMC subsystem with an HP subsystem.

What information about the HP subsystem should be checked by the implementer?

- A. The HP subsystem is listed in the SSIC website in the "Storwize V7000 Host Attachment" category

- B. The HP subsystem is listed in the Storwize V7000 supported hardware list, and it supports quorum disks
- C. The HP subsystem is listed in the Storwize V7000 supported hardware list, and it supports extended quorum
- D. The HP subsystem is listed in the SSIC website in the "Storwize V7000 Storage Controller Support" category

**Answer: B**

NO.9 What action must be taken to receive timely updates automatically on firmware and flash updates/releases?

- A. Register to receive IBM My Notifications
- B. Sign up for Fix Central notifications
- C. Use the Storwize V7000 Call Home feature
- D. Utilize the Storwize V7000 GUI for alert notifications

**Answer: D**

NO.10 On the Storwize V7000 what is the meaning of LUN masking?

- A. Ensure access integrity across multiple heterogeneous host servers
- B. Ensure the performance of the volume for the specific host servers
- C. Ensure encryption of the data from the host servers
- D. Ensure compression of the data from the host servers

**Answer: A**